



*Advanced Standard Drive*

**Agile**



**BONFIGLIOLI**

## ***Bonfiglioli: Specific Solutions for Power Transmission and Motion Control***

Product diversification, process automation, and quality have enabled Bonfiglioli to play a leading role in the industry. Bonfiglioli's policy focuses on integrated solutions, competence and innovative technology as key factors, indispensable to ensure customer satisfaction, while production is aimed at achieving the highest standards.

Bonfiglioli product portfolio aims at meeting the toughest and most sophisticated requirement for Industrial Process and Automation Solution and for Mobile Equipment Solutions.







## Industrial equipment applications



**BONFIGLIOLI  
RIDUTTORI**

Representing Helical, Bevel and Worm Gearmotors and Gear Units



**BONFIGLIOLI  
VECTRON**

Representing AC drives

## Mobile equipment applications



**BONFIGLIOLI  
TRASMITAL**

Representing Planetary Gearmotors and Gear Units

<b>Introduction</b>	4
<b>Overview</b>	5
<b>Areas of application</b>	7
<b>Designation</b>	8
<b>Innovation at the service of people</b>	10
<b>Synergy with Bonfiglioli motors</b>	13
<b>VPlus engineering software</b>	14
<b>Sensorless control of permanent magnet synchronous motors</b>	17
<b>Energy saving</b>	18
<b>A drive with a PLC built in</b>	20
<b>Integrated safety thanks to Safe Torque Off</b>	22
<b>Selective Multi-Motor Control (SMMC)</b>	24



<b>Resource pack</b>	
	26
<b>Functional layout</b>	
	27
<b>General technical data</b>	
	28
<b>AGL402 series - Technical data</b>	
	31
<b>Dimensions</b>	
	35
<b>Standards and Regulations</b>	
	38
<b>Optional modules</b>	
	39
<b>Mounting</b>	
	40
<b>ASK-USB serial connection kit</b>	
	44
<b>Braking Resistors</b>	
	45
<b>Line choke</b>	
	47
<b>Worldwide</b>	
	48



The new **Agile** Series of inverter drives from Bonfiglioli sets new standards in technology for a broad range of users. Agile drives are particularly suited to the food & beverage, textile, wood, packaging and ceramic industries, where they can be used with a variety of medium complex automation processes.

Agile inverter drives implement a sensorless vector control algorithm that offers excellent performance in speed and torque control. A wide range of built-in functions deliver significant benefits to users seeking safety, energy savings, diagnostics, reliability and local intelligence.

The innovative user-friendliness of these drives is evident from the word 'go'. Even inexperienced users will find installation and start-up quick and easy.

Agile inverter drives are designed for reliability at component, machine and process levels. Software functions have been specially developed to inform users of the ideal time to perform maintenance in order to ensure continuous service from the plant.

Transparent control is ensured by Agile drives' ability to accurately diagnose themselves and surrounding components in order to avoid faults and failures in the system.

Reliable and generous, Agile drives also boast special functions designed to reduce programming costs. These functions facilitate the selection and setting of software parameters and provide a speedy and intuitive man-machine interface.

The advanced energy saving functions, adaptability and robustness of Agile inverter drives reduces impact on the environment, too.

Integrated PLC functions allow Agile drives to achieve a practical level of autonomy. The CPU not only controls the motor, but also provides the user with a number of programmable logic functions that can be used to complement or replace PLC's and process controllers.

*Bonfiglioli drive range*

Active Cube



Active



VCB



Agile



Synthesis



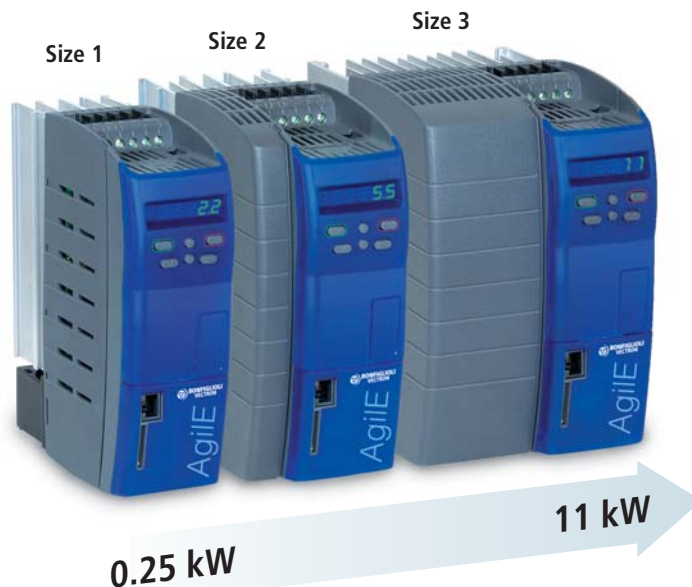
Functions

Performance

Agile inverter drives are designed to control asynchronous induction motors and permanent magnet synchronous servomotors. With their sleek, compact cases, Agile drives have been specially developed for maximum functional integration. With a wide range of hi-tech functions already built in, Agile drives are complete and fully functional drives despite their small size. Thanks to intelligent design, the generous and advanced standard functions can be expanded by accessories and optional modules to extend versatility even further.



The Agile Series comes in three book-size models covering power requirements from 0.25 to 11 kW.





Agile inverter drives can be used in all areas of industry, but are particularly suited to the following applications:

### Food & Beverage



### Textile



### Wood



### Packaging



### Ceramics



### Selection guide

To order an Agile inverter drive, you need to specify the designation string corresponding to it. This comprises a series of fields that define exactly and uniquely what drive you need for your particular application. The first five fields identify the drive and its basic variants. These fields must be mandatorily compiled in your order. You cannot leave any of these fields blank.




The next four fields on the other hand define optional configurations for your drive. To do without any of these options, simply leave the corresponding field blank.

BASIC VARIANTS					OPTIONAL VARIANTS			
<b>AGL</b>	<b>402</b>	<b>-</b>	<b>18</b>	<b>2</b>	<b>F</b>	<b>A</b>	<b>MPSV</b>	<b>CMPDP</b>
							<b>RP</b>	<b>BO</b>
								<b>Software arrangement</b> <b>(blank)</b> = standard (default) <b>BO</b> = Block-Override
								<b>Memory extension</b> <b>(blank)</b> = no card (default) <b>RP</b> = Resource Pack installed
								<b>Communication module</b> <b>(blank)</b> = no module (default) <b>CM-CAN</b> = CANopen interface <b>CM-PDP</b> = Profibus DP interface <b>CM-232</b> = RS232 interface <b>CM-485</b> = 2 <sup>nd</sup> RS485 interface
								<b>Mounting kit</b> <b>(blank)</b> = panel fixing (default) <b>MPSV</b> = feed-through no fan <b>MDIN</b> = DIN rail (size 1 only) <b>MNVIB</b> = anti-vibration
								<b>Design version</b> <b>A</b> = standard cooling (default)
								<b>EMC filter</b> <b>F</b> = integrated (default)
								<b>Size</b> <b>1</b> = size 1 <b>2</b> = size 2 <b>3</b> = size 3
								<b>Size</b> <b>02</b> = 0.25 kW <b>03</b> = 0.37 kW <b>05</b> = 0.55 kW <b>07</b> = 0.75 kW <b>09</b> = 1.1 kW <b>11</b> = 1.5 kW <b>13</b> = 2.2 kW
								<b>Size 1</b> <b>15</b> = 3.0 kW <b>18</b> = 4.0 kW <b>19</b> = 5.5 kW <b>21</b> = 7.5 kW <b>22</b> = 9.2 kW <b>23</b> = 11 kW

#### Series

**AGL 402:** inverter Agile 3ph x 360-480VAC +/- 10%

*Basic offer*

Inverter	Power supply	Power	Filter	Dimensions		
	[V]	[kW]		[HxDxW]		
AGL402-02 1 F A	3ph x 400	0.25	Integrated	200 x 170 x 60		
AGL402-03 1 F A	3ph x 400	0.37	Integrated			
AGL402-05 1 F A	3ph x 400	0.55	Integrated			
AGL402-07 1 F A	3ph x 400	0.75	Integrated			
AGL402-09 1 F A	3ph x 400	1.1	Integrated			
AGL402-11 1 F A	3ph x 400	1.5	Integrated			
AGL402-13 1 F A	3ph x 400	2.2	Integrated	200 x 196 x 80		
AGL402-15 2 F A	3ph x 400	3.0	Integrated			
AGL402-18 2 F A	3ph x 400	4.0	Integrated	200 x 205 x 125		
AGL402-19 3 F A	3ph x 400	5.5	Integrated			
AGL402-21 3 F A	3ph x 400	7.5	Integrated			
AGL402-22 3 F A	3ph x 400	9.2	Integrated			
AGL402-23 3 F A	3ph x 400	11	Integrated			



Agile inverter drives help bridge the gap between user and process by providing software and hardware functions that simplify the management of complete systems.



Agile inverter process drives provide accurate sensorless vector control of asynchronous induction motors and permanent magnet synchronous motors, and also help manage the complete automation system by contributing to **energy saving, safety, maintenance and logic control**.

Agile drives are Bonfiglioli's solution to the needs of the standard drive market, and boast a special "all-in-one" formula that delivers exceptional versatility.

- |   |                          |  |                              |
|---|--------------------------|--|------------------------------|
|  | Easy start up mode       |  | Leader in room saving        |
|  | Energy stand-by          |  | Integrated automation        |
|  | Safety inside            |  | Sensorless brushless control |
|  | Diagnostic fault scanner |  | Resource pack                |
|  | Downtime suppressor      |  | E-served                     |

### Rapidity

It only takes a few minutes to install and set up an Agile drive. Users will find everything quick and easy, from control rack installation to software configuration, and will have the motor up and running in next to no time.

- Drilling template
- DIN rail mounting
- Clearly identified power terminals
- Pre-calibrated for Bonfiglioli motors
- Automatic and permanent adaptive tuning
- Pre-selection of application masks
- Customisable units of measure
- On-line help



### Energy saving

Agile helps reduce system energy requirements by minimising its own losses and those of the motor.

- Sensorless control of permanent magnet synchronous motors
- Automatic suspension of power stage with motor stopped
- Adaptation of voltage to suit the load applied to the motor shaft
- Minimum earth leakage



### Functional safety

Agile drives respect all the safety standards applicable to electronic variable speed control.

In particular, Agile drives provide functional safety according to EN61508 SIL2 and electrical safety according to EN954-1 Cat. 3, in conformity to EN61800-5-2 product standards for torque elimination through the physical disconnection of the motor inside the inverter.

- Safe Torque Off
- Foolproof wiring



### Diagnostic analysis

Agile drives provide valuable support for the analysis of critical events affecting the drive itself and the system in which it is installed. They also incorporate a tool for monitoring, reconstructing and interpreting system dynamics

- Alarm log
- Drive and motor status recovery
- Autodiagnosics after critical events
- Built-in multi-trace oscilloscope



### Failure prevention

Agile drives keep themselves and the system they are installed in under control, and make a generous contribution to maintenance efficiency by preventing unexpected machine stoppages.

- Estimation of capacitor maintenance intervals
- Estimation of cooling fan maintenance intervals





### Space saving

The compact book size of Agile drives means significant space saving and great manoeuvrability inside the control cabinet.

- High power concentration
- Space saving in the control panel
- Book size
- Side by side installation
- Same height for all sizes



### Built-in PLC

Agile drives can perform simple and complex programmable logic operations on physical signals to their terminals and on internal software variables, and can combine these operations to create a functional program that can complement or replace a control panel PLC.

- Programmable logic functions
- Graphic block programming
- Cyclical operating system
- Accessible drive variables
- Input/output buffers



### Sensorless brushless

Agile vector drives can control even sensorless permanent magnet synchronous motors thanks to an innovative algorithm which provides full starting torque.



### Resource pack

Agile drives can be fitted with an MMC standard non-volatile flash memory expansion.

- MMC standard memory expansion card
- Any capacity cards supported
- Parameter copy function
- Integrated application documentation
- Integrated application software



### E-served management

Agile can be fully managed through Bonfiglioli's MOSAICO e-business platform that lets you select drives, order them and monitor delivery over the internet.

Technical training is also available through Bonfiglioli's HUB e-learning system. There is even a dedicated website for the distribution of newsletters.



To set up a modern microprocessor drive, the electrical data of the motor have to be known for the drive's speed and torque control to use the right mathematical model for calculating control values.

To facilitate start-up and avoid the user having to find and then manually enter all the necessary data, Agile drives come with all the characteristics of equivalent Bonfiglioli motors pre-programmed. The drive loads these as default values into the parameters that can be viewed using the built-in display or VPlus software.



The first time you switch the drive on, the motor parameter section will display a pre-programmed list of numeric values ready for use with Bonfiglioli motors. To use the drive with another motor, simply modify these parameters as required during the start-up procedure.

Parameter	Data Set 0	Data Set 1	Data Set 2	Data Set 3	Data Set 4
369 Motor Type	1 - Asincrono				
370 Rated Voltage		400,0 V	400,0 V	400,0 V	400,0 V
371 Rated Current		5,4 A	5,4 A	5,4 A	5,4 A
372 Rated Speed		1410 U/min	1410 U/min	1410 U/min	1410 U/min
373 No. of Pole Pairs		2	2	2	2
374 Rated Cosinus Phi		0,76	0,76	0,76	0,76
375 Rated Frequency		50,00 Hz	50,00 Hz	50,00 Hz	50,00 Hz
376 Rated Mech. Power		2,2 kW	2,2 kW	2,2 kW	2,2 kW

**Bonfiglioli default motor data**

A table of correspondence can be defined between each Agile drive size and the Bonfiglioli 4-pole asynchronous or permanent magnet synchronous motor for which the drive is ready for use.

Inverter	Flanged/Compact asynchronous motor	Nominal power (kW)
AGL402-02 1 F A	BN63C4 / M05B4	0.25
AGL402-03 1 F A	BN71B4 / M1SD4	0.37
AGL402-05 1 F A	BN80A4 / M1LA4	0.55
AGL402-07 1 F A	BN80B4 / M2SA4	0.75
AGL402-09 1 F A	BN90S4 / M2SB4	1.1
AGL402-11 1 F A	BN90LA4 / M3SA4	1.5
AGL402-13 1 F A	BN100LA4 / M3LA4	2.2
AGL402-15 2 F A	BN100LB4 / M3LB4	3.0
AGL402-18 2 F A	BN112M4 / M3LC4	4.0
AGL402-19 3 F A	BN132S4 / M4SA4	5.5
AGL402-21 3 F A	BN132MA4 / M4LA4	7.5
AGL402-22 3 F A	BN132MB4 / M4LB4	9.2
AGL402-23 3 F A	BN160MR4 / M4LC4	11

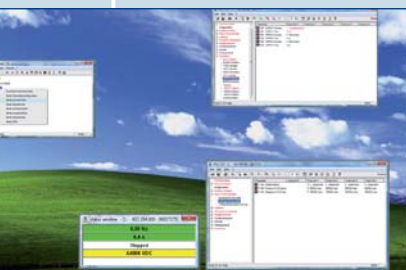


VPlus software provides a common programming and monitoring platform for all Bonfiglioli inverter drives.

Now in version 7, VPlus provides an effective aid to configuring, diagnosing and controlling your drive from a PC, and also provides a range of practical tools to manage the resources of your Agile inverter completely and efficiently.

Just connect the computer to the drive via the ASK-USB accessory cable and launch VPlus. Serial communications are quickly established and entire drive setup is displayed on the computer monitor along with a toolbar containing drive control functions.

VPlus supports multiple and simultaneous communications between the same number of drives as there are USB ports on the computer, as well as a connection to the Bonfiglioli drive field bus.

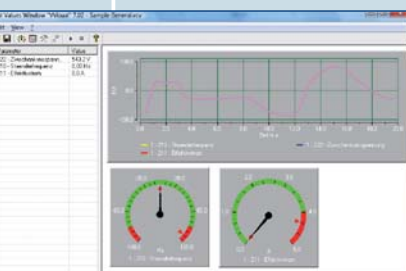


### VPlus functions

Simply click on the relevant icons to:

- Upload parameter files to the drive
- Configure drive parameters
- Read current parameters values
- Run the motor setup
- Open the inverter monitoring window
- Display the 4-trace oscilloscope
- Open the inverter status window
- Program the drive's built-in PLC

Each of the above functions opens a new window that remains visible along with all the others to permit a global view of drive functions.



### Graphic control panel

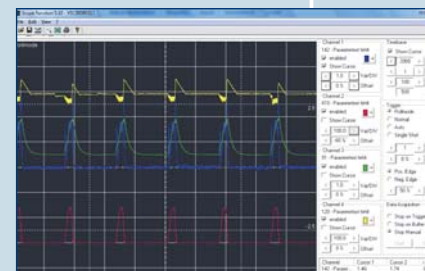
Current drive functioning values can be displayed numerically or graphically, as the user wishes.

The IO monitor window lets you view the inverter's digital inputs and outputs and motor status.



VPlus software incorporates a digital oscilloscope with the following functions:

- 4 programmable traces
- 2 ms sampling rate
- manual/automatic X-Y axis scaling
- programmable threshold triggers
- auxiliary cursors
- print function
- data export in CSV format
- image saving



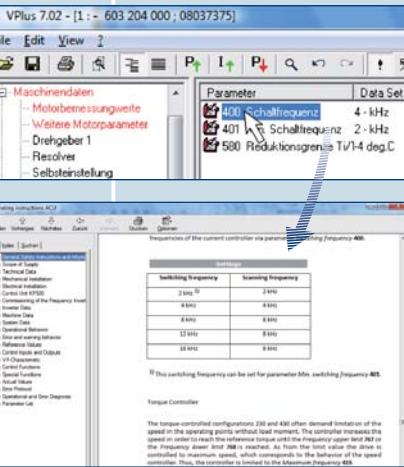
The oscilloscope enhances the functionality of the Agile drive's own diagnostics by permitting the run-time display of any physical or virtual variable handled by the drive and the real time analysis of the entire process driven by the motor shaft.

To make it easier for users to analyse application parameters off-line, VPlus also provides a file compare function that identifies differences and similarities.

The screenshot shows the Windows Task Manager Performance tab. At the top, it indicates the system is a 64-bit Windows 7 system running on a 64-bit processor with 8 GB of RAM. The CPU usage is 100%. Below this, there are sections for Memory, Disk, and Network usage. The Performance tab also displays a detailed list of running processes, including System, smss.exe, csrss.exe, explorer.exe, and various system services. The list includes the process name, PID, and the user running the process.

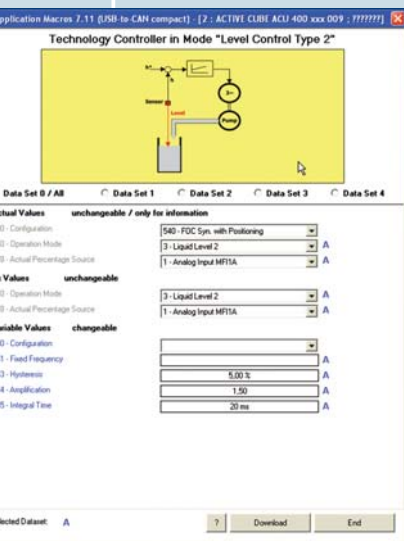
Process Name	PID	User
System	0	System
smss.exe	4	System
csrss.exe	8	System
explorer.exe	100	System
System	104	System
System	108	System
System	112	System
System	116	System
System	120	System
System	124	System
System	128	System
System	132	System
System	136	System
System	140	System
System	144	System
System	148	System
System	152	System
System	156	System
System	160	System
System	164	System
System	168	System
System	172	System
System	176	System
System	180	System
System	184	System
System	188	System
System	192	System
System	196	System
System		





### On-line help

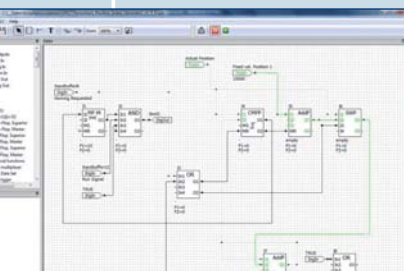
To guide users in programming the drive, VPlus also features an on-line help that explains the meaning and the effect of each drive parameter. Simply click on the desired parameter to access help on it.



### Application masks

To help users set up the drive for frequent applications quickly and easily, VPlus includes a library of application masks showing only those software parameters that are strictly necessary for application start-up.

Users benefit from a schematic description of the functionalities provided by the selected mask as well as the parameters needed to configure it.



### Built-in graphic PLC

The internal PLC of Agile drives can be programmed using VPlus software. The various functional blocks processed by the PLC's operating system can be programmed in VPlus simply by selecting the corresponding page.

A graphic editor in VPlus lets you load and drag all the logic blocks recognised by the drive to form the functional program that the PLC needs to implement in RUN mode.

## Sensorless control of permanent magnet synchronous motors

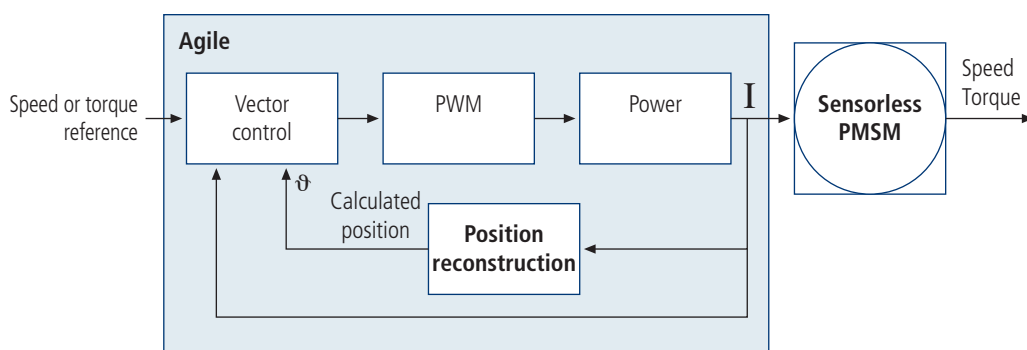
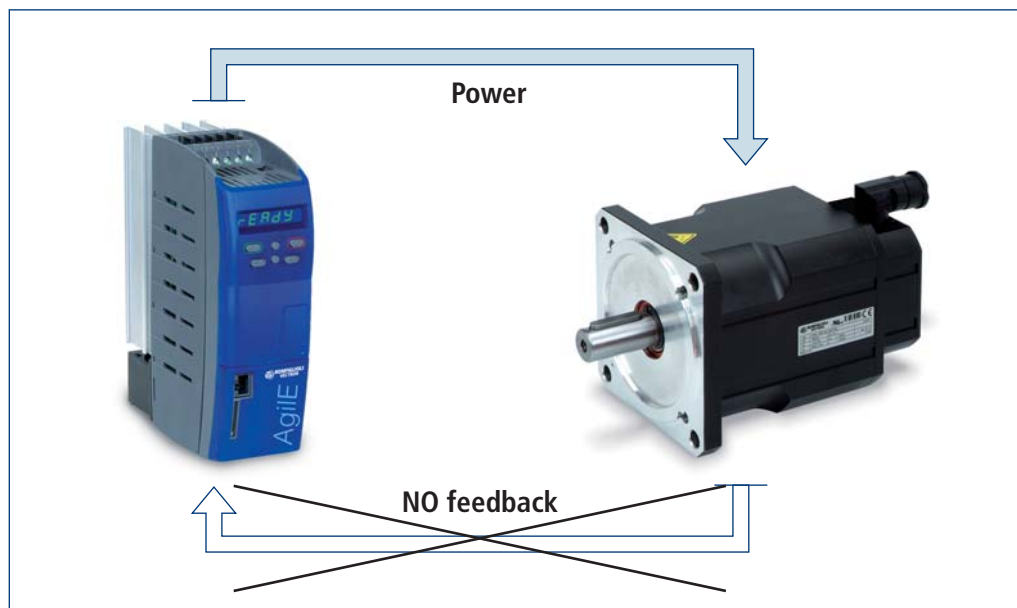
**Agile** 17

In brushless motor control, the exact angular position of the rotor must be known at all times for the drive to commutate the inverter phases.

The conventional method for tracking rotor position is to incorporate an encoder or resolver inside the servomotor to provide the drive with the necessary electrical signals. This, however, requires extra cabling, data interfaces and controls.

Thanks to innovative technology, Agile drives can control brushless servomotors without the need for sensors, eliminating the cost of superfluous components, wiring, interfaces and controls. Agile drives use efficient algorithms to calculate the instantaneous angular position of the motor shaft from measurements of the current absorbed by the motor. This gives significant savings in costs, eliminates the criticalities inherent in sensors, simplifies the control system and reduces energy consumption by permitting a more efficient motor architecture to be used.

By combining analytic techniques to reconstruct the electrical status of the motor and functional analyses of its magnetic circuit, Agile drives provide effective vector control of torque.





Energy saving is a common objective in all areas of manufacturing. No company is exempt from the need to save money and help the environment at the same time.

If energy saving is your aim, Agile is the drive to help you achieve it.

AgileE drives incorporate numerous functions for reducing the electrical energy needed to power motors and can make a major contribution to energy saving in any plant.

Bonfiglioli knows exactly what factors determine a drive's energy efficiency and how to achieve major energy savings. Now all this know-how has been concentrated into a single product.



### Sensorless control of permanent magnet synchronous motors

Modern brushless motors are extremely efficient thanks to a design that favours excellent electromechanical energy conversion and minimises heat loss through the rotor.

Agile drives are designed to bring the benefits of brushless motor technology within the reach of all users.

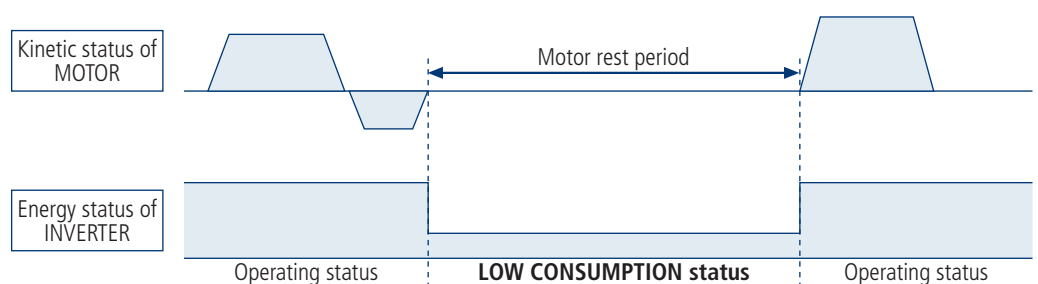
Agile drives do not need encoders or resolvers on board the motors to control them. They can therefore save money by eliminating superfluous components, without any loss of dynamic motor performance.



### Standby mode

Motors are often used in applications involving intermittent functioning cycles characterised by alternating run and rest phases. Under conditions like these, the drive itself has to remain powered on in order to be ready to start the motor as soon as the application demands.

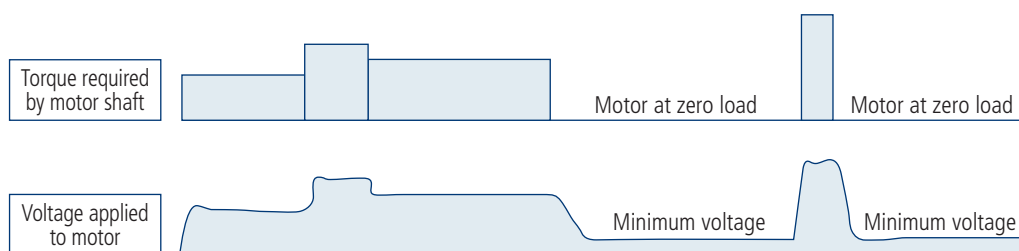
To avoid unnecessary energy consumption during motor rest periods without actually disconnecting power to the inverter, Agile drives use a special auto-standby function, which leaves the inverter in a "sleep" condition with only its control circuits active, a condition in which energy consumption is minimal. A programmable delay can be adjusted by users in order to extend the standby mode even to keypad display. As soon as a start command is received, the inverter "wakes up" immediately to power the motor.



### Power managing

Motor efficiency is significantly conditioned by the quality of the power supply.

Agile drives use control to reduce motor voltage to suit applied loads without compromising performance. This reduces motor losses, consumption and maintenance requirements and helps extend motor life. For example, if the motor is run up to rated speed at zero load, there is no need to apply full rated voltage. The minimum voltage compatible with the needs of motor magnetisation is all that is needed.

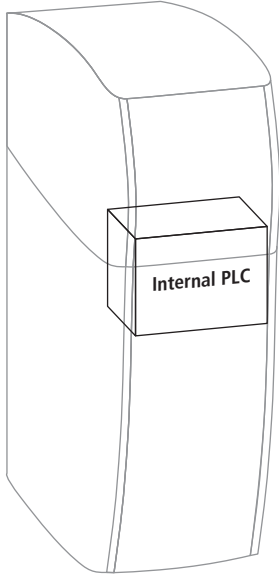


### Minimum earth leakage

Agile drives are equipped with a built-in, low leakage current EMC filter that conforms to all applicable standards. By significantly reducing earth leakage, this filter also maximises energy savings under all operating conditions.







Modern PLCs are extremely evolved devices with high calculation and interface capacities. The problem is that they need qualified, expert personnel to convert the needs of the machine into sequences of PLC instructions. These may even have to be encoded according to different proprietary programming standards.

The inverter is becoming one type of actuator to which PLCs can delegate the dynamic control of an axis in synchronisation with other parts of the machine.

Agile drives guarantee efficient motor control and incorporate a programmable logic controller that can be used to complement or replace a conventional control panel PLC.

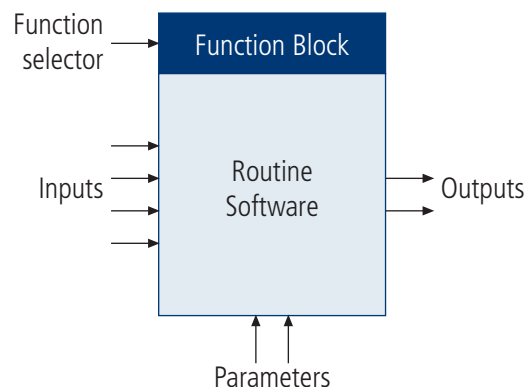
In the heart of every Agile drive is a PLC capable of performing multiple logic operations (AND, OR, XOR) and functions (counters, timers, comparators, multiplexers, decoders, oscillators, etc.). These can be combined using a graphic editor to create complex functions. The result is an intelligent local controller capable of handling the drive's own internal variables (currents, frequencies, machine statuses, etc.), I/O signals to and from the terminals, and multiplexed data exchanged over a field bus.

The intuitive graphic editor allows even non-expert users to program the PLC of an Agile drive without having to learn complicated programming languages that very few can master. Agile users do not have to rely on others to program their drives.

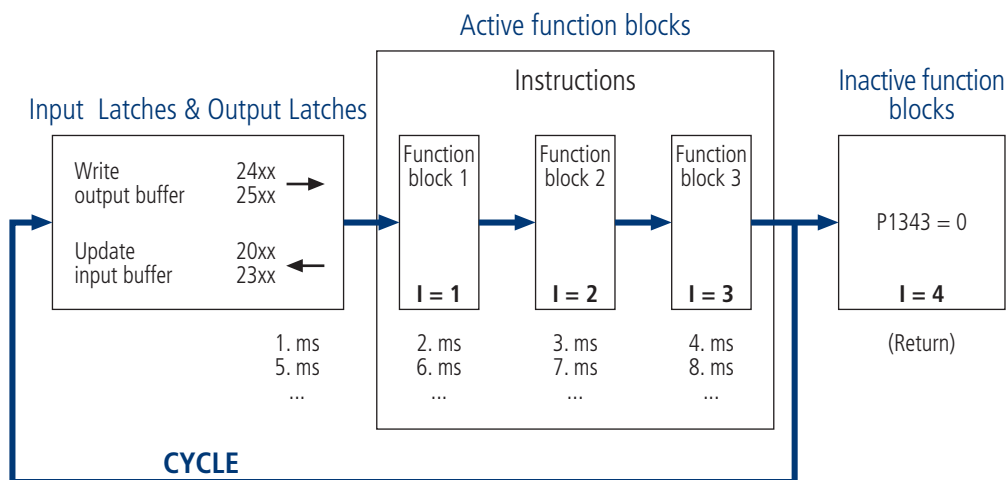
Agile drives are powerful and intelligent and, by relieving the main control panel PLC of local tasks, conform perfectly to the concept of **distributed logic**.

The Agile PLC recognises and handles 120 different functions, which can be used within 32 programmable functional modules (indexes).

Each module has a maximum of 4 inputs, 2 outputs and 2 configuration parameters. When the drive is switched on, its operating system indexes all the active modules in sequence, taking only 1 ms per module. Each module is implemented by running all its instructions in sequence. When one module has been completed, the OS moves on to the next, and so on.



The OS scans input and output buffers, samples input signals and executes output signals before it indexes the sequence of active modules.



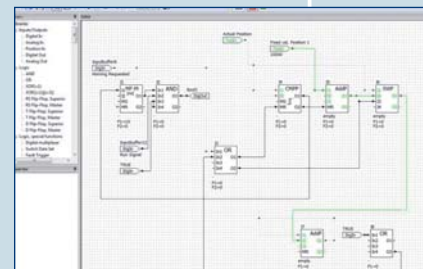
As in any control panel PLC, cycle management is entrusted to the operating system and is independent of all other processes managed by the CPU.

The program is therefore deterministic and scan time proportional to the number of active function blocks.

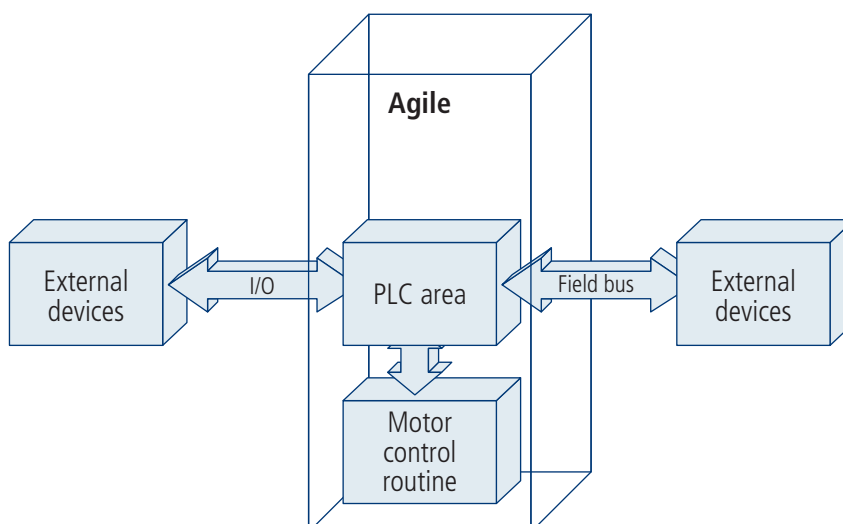
In any automation process, the cycle period can be calculated by summing the 1-ms delays introduced by each function block.

Agile PLC functions can be programmed using VPlus software, which graphically displays the program to which the drive's memory corresponds in real time.

VPlus software also provides a page that can be used to load graphic function blocks and link them together to create complex logic networks for use by the drive.



The Agile PLC supports and processes all the variables used by the drive software, including I/O variables, strings exchanged over the field bus and numeric motor control values. The PLC is therefore perfectly able to exchange signals with external devices like sensors, actuators, inverters, PLCs, PC's, etc.) as well as with the drive itself.

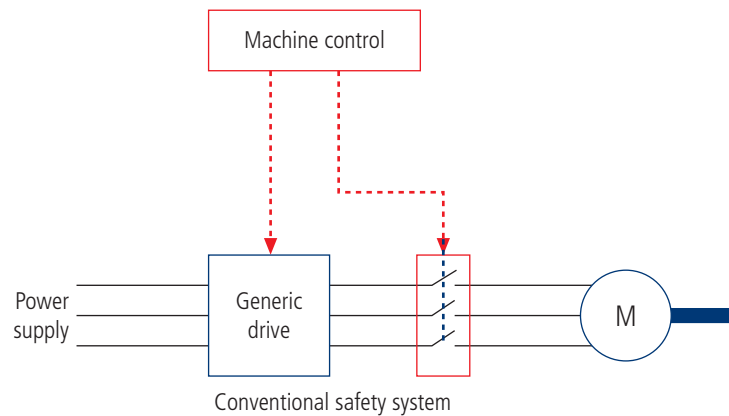


The Machinery Directive establishes the **safety requirements** that all machines must conform to before they can carry the CE mark and be manufactured and sold within the European Community. In particular, all machine movements must be monitored by a safety system capable of intervening in an emergency to stop motors and **disconnect power** until normal operating conditions can be restored.

Safety systems must intervene effectively and guarantee physical disconnection between motor and power source. They must also be **reliable**, i.e. never fail to function.

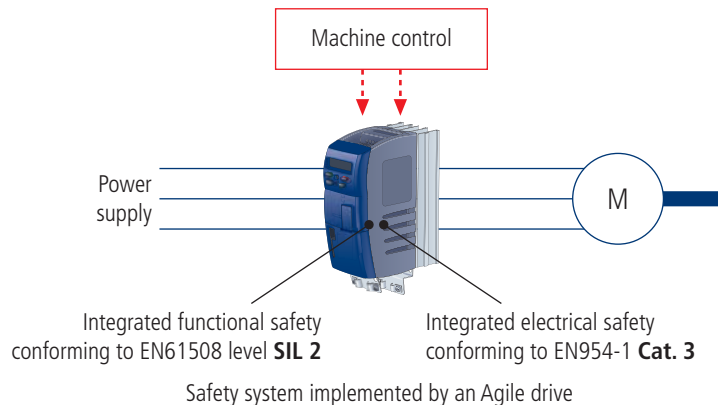
Standards EN 954-1 and EN 61508 regulate safety system effectiveness and reliability respectively. These standards assign **two distinct value scales** to effectiveness and reliability (Category and Level), ensuring that machine manufacturers design in a degree of safety adequate to the needs of the application.

In a conventional drive, to guarantee the effective disconnection of the motor and the absence of turning moment at its shaft, the safety system uses remote power switch outside the drive to insulate the motor electrically.



## Integrated safety thanks to Safe Torque Off

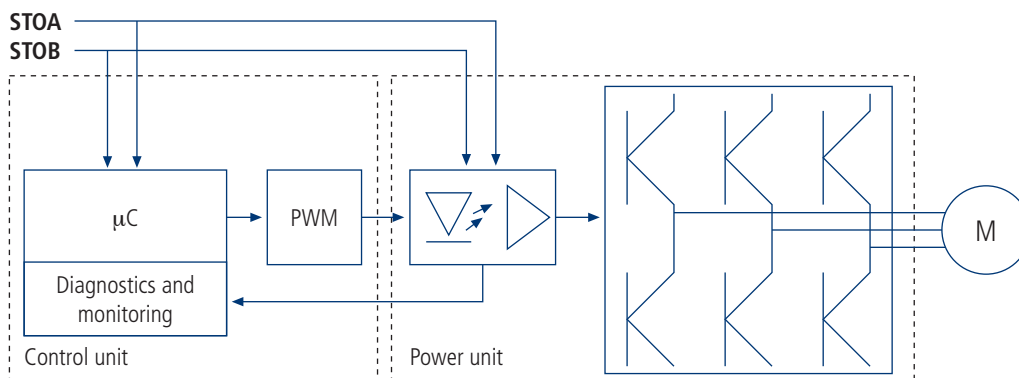
Bonfiglioli has integrated the Safe-Torque-Off system (STO, EN61800-5-2) in Agile drives in response to market demand to reduce the size of control panels, minimise the number of operating components, simplify control, and eliminate the mechanical stress caused by the sudden application of the brake while the shaft is still turning. In an emergency this system disconnects the motor in compliance with **EN954-1 Cat. 3** and **EN61508 SIL2**, without the need for external contactor.



Agile drives incorporate redundant functional logic and hardware architecture to disconnect the motor safely and stop it in the minimum time possible.

The simultaneous activation of two digital inputs, STOA and STOB, corresponding to two identical but distinct electrical paths, causes the software to recognise an external emergency condition, suspend the generation of PWM pulses and physically disable the optoisolators that transmit signals to the IGBT drivers, all in less than 10ms. This brings the motor to a controlled stop, followed by total isolation from the inverter.

Any alarm condition arising inside the drive also generates an emergency stop in the same way, irrespective of STOA and STOB signals.



STOA	STOB	Effect
0	0	Safe Torque Off active; motor stopped and isolated
0	1	Safe Torque Off in stand-by; the software awaits a second signal: after 5-s wait time with no signal, the drive generates an alarm
1	0	
1	1	Safe Torque Off deactivated; the motor functions conventionally

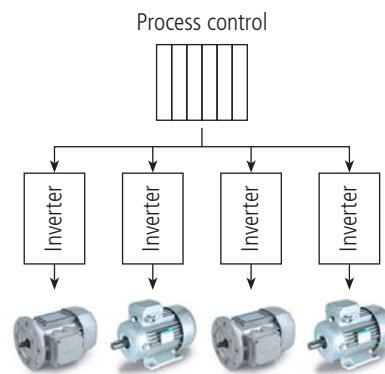


## Selective Multi-Motor Control (SMMC)

Industrial applications often require a number of axes to be controlled separately and driven one at a time in a predefined sequence in which no two motors operate simultaneously.

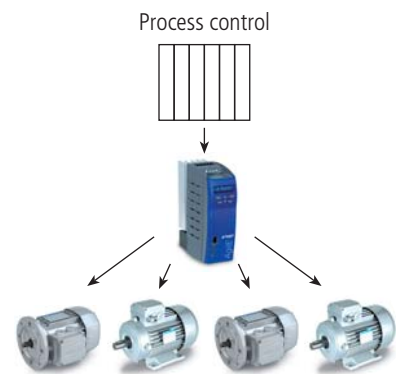
In conventional systems of this type, each individual axis has to be controlled by its own drive, configured to power its motor for a set time and then to remain inactive while the control sequence passes on to the next axes. The process controller must therefore send each drive its own set of commands and must also transmit the necessary reference signals over a corresponding number of analog ports or network addresses. This requires a high level of redundancy in system components, cabling and control software and results in significant energy consumption.

Agile drives are specially designed to provide efficient control of complex systems comprising multiple but non-simultaneous motors. Agile drives can handle four separate motors even with different electrical characteristics, reserving a dedicated area of memory to the control of each. The architecture of Agile drives lets you store simultaneous configurations for all four motors and control them independently at separate times according to independent criteria and strategies, but using the same power hardware.



### Conventional system:

Only the drive controlling the axis to be moved is activated at any one time, leaving the others disabled



### Agile Selective Multi-Motor Control:

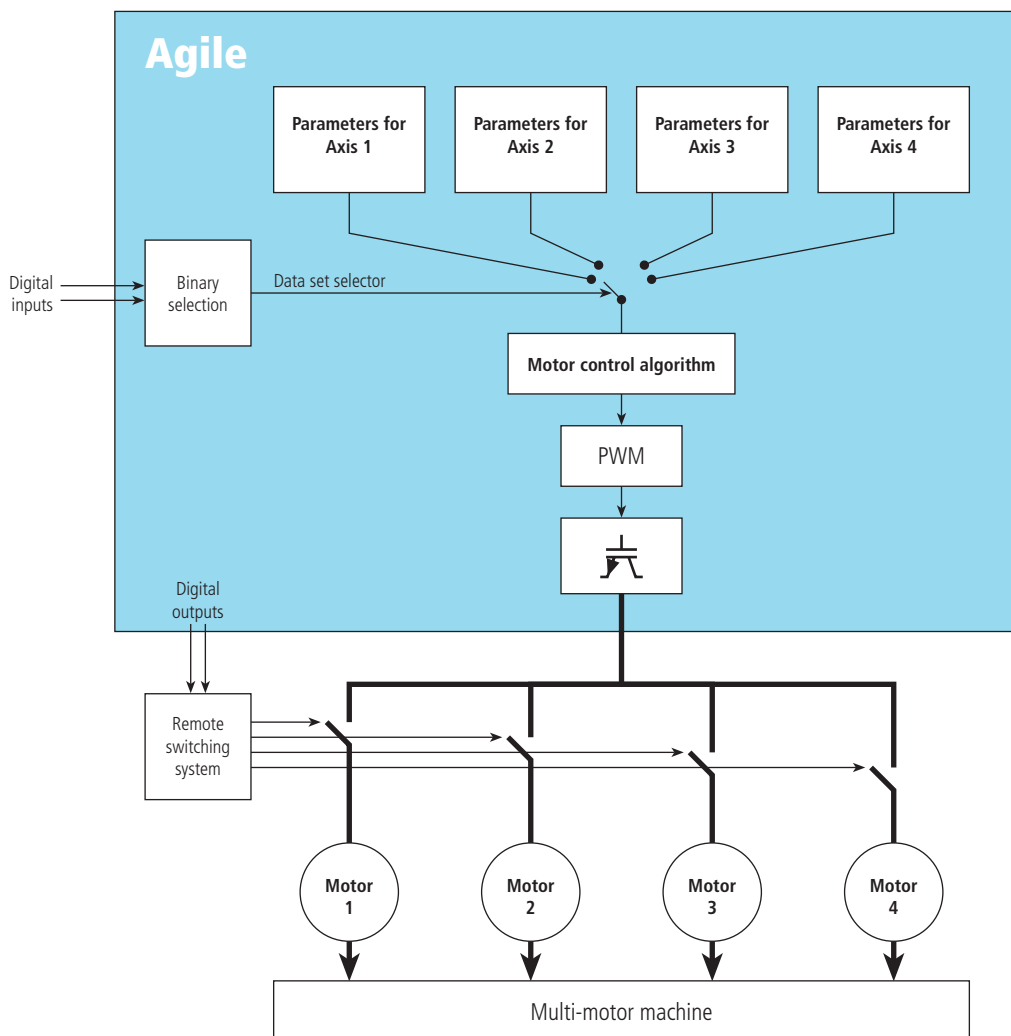
Just one drive is needed to control the motor of the axis to be moved, leaving the others in rest mode

By using two digital inputs in binary combination mode, users can activate the drive's parameter configuration corresponding to just one of the four motors, thus excluding the other three. The currently active control algorithm (V/Hz, sensorless vector control, sensorless brushless motor control) controls the selected motor and drives it according to the parameter settings in the corresponding dataset.

## Selective Multi-Motor Control (SMMC)

**Agile** 25

The drive's digital outputs can be used to switch the cabling upstream from the motors to ensure that only one motor is ever connected to the drive at any one time.





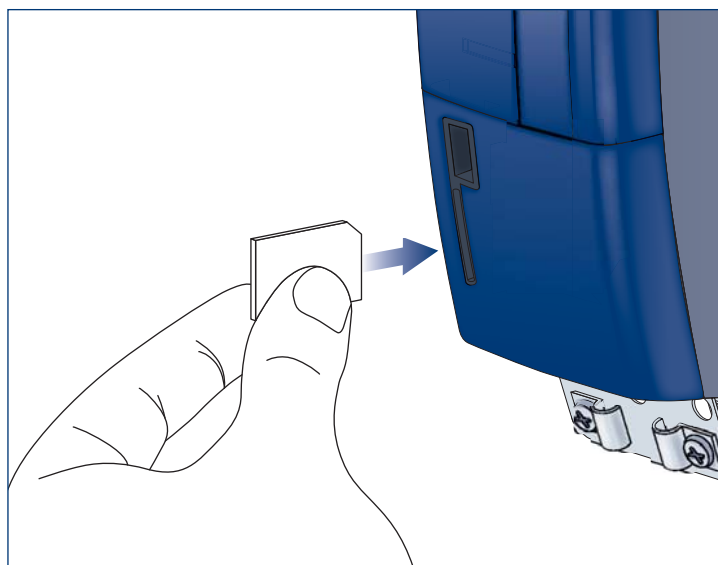
As with all microprocessor systems, the inverter firmware, all the motor control routines and all the drive functions are contained in the internal memory of Agile drives.

This main memory is strictly reserved for the drive's operating system. Agile drives, however, also support a removable MMC memory card or Resource Pack that conforms to SPI protocol and can be used to save and organise data as the user wishes.

A slot is provided in the front panel of the Agile drive for inserting the MMC card. Users are free to select and buy whatever card they wish. Cards can be used for any of the following purposes:

- data exchange with the drive
- storage of operator manuals, catalogues and technical documentation
- saving configuration files to and from the drive
- saving oscilloscope traces
- storing any other data relevant to the application

There are no limits to memory capacity. Agile drives support all common card sizes.



The terminals, connectors and push-buttons of the Agile user interface are located where they are easily accessible without having to use tools.

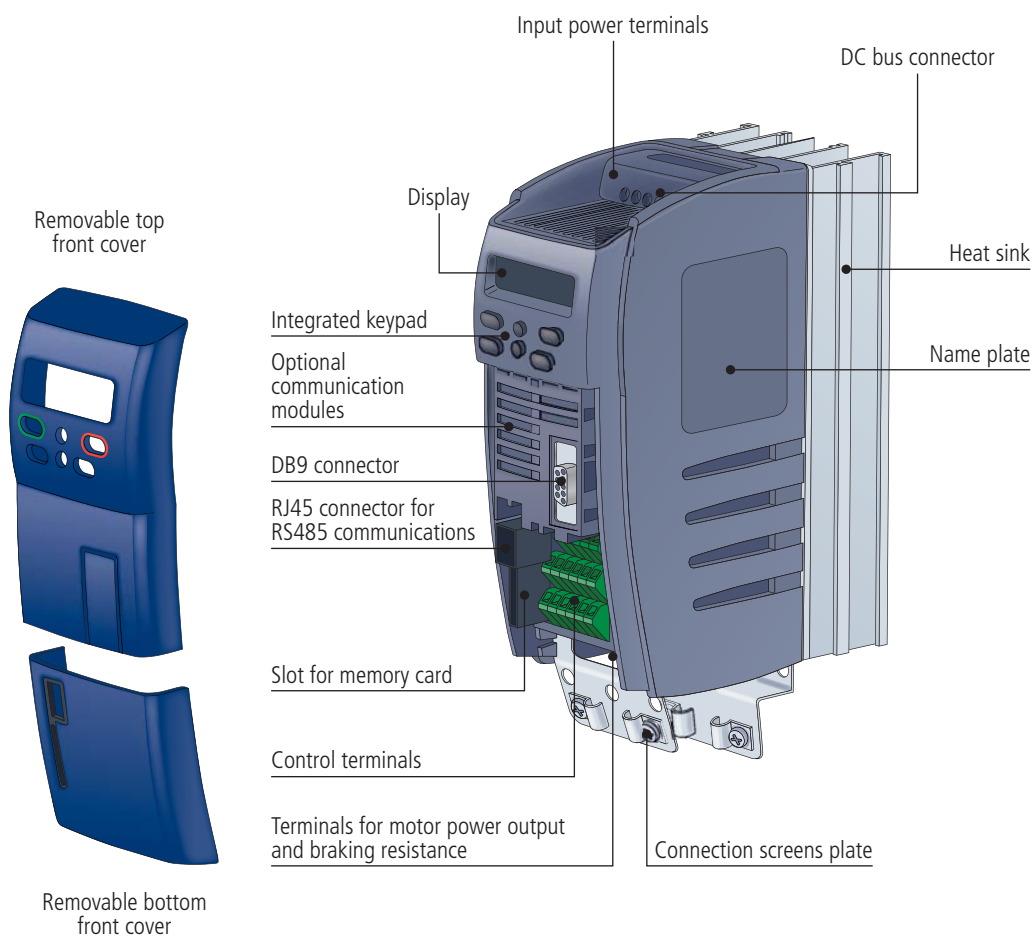
The power terminals (inverter power input and motor power output) are located at the top and bottom of the drive and are individually marked with clearly visible symbols to ensure correct wiring.

Control terminals are located at the front of the unit and are easily accessible simply by removing the blue push-on protective cover.

A keypad, elegantly integrated in the drive body, provides six function keys for drive programming, monitoring and control.

The drive is also equipped with an RJ45 connector for the RS485 Modbus serial interface as well VABus and a slot for an MMC memory card that can be used to copy drive parameters.

An RS232 port, Profibus DP or CANopen communication port can be fitted as optionals. If one or more of these ports is required, installation is quick and easy and only requires the protective cover to be removed to access the slots beneath the operator panel in the front of the drive. The installation of these optional modules does not alter the overall dimensions of the drive.





## General technical data

### Environment

Transport and storage temperature -25°C ... 55°C  
Operation temperature: 0°C - 40°C (40°C-55°C with derating)  
Environment class: 3K3 (EN60721-3-3)  
Relative humidity 5%...95%, no condensation  
Altitude of installation: up to 3000m (over 1000m with derating)  
Storage conditions: according to EN50178  
Degree of protection: IP20

### Electrical

Rated mains voltage: in the range 323 .... 528 V  
Rated mains frequency: in the range 45 ... 69 Hz  
Overload current: 150% nominal current  
Peak current: 200% nominal current  
Electric protections: short circuit / earth  
Braking transistor: built-in on standard device

### Standards

CE conformity: Low voltage directive 2006/95/EC and EN50178 / DIN VDE 0160 and EN61800  
Interference immunity: according to EN61800-3  
UL approval: according to UL508c

### Connections

The Agile drive is fitted with power input terminals for connection to the mains, power output terminals for driving the motor and signal terminals for inverter control, subdivided into four sections.

### Power terminals

The power terminals are located at the top and bottom of the unit.  
Mains input power is connected to the top of the drive where a DC-bus connection is also provided.  
The power output cables to the motor are connected to the bottom of the drive where there is also a connection for a braking resistance if required.  
Just as on ACT and ACU drives, this effective separation of input and output power terminals helps prevent mis-wiring through human error.

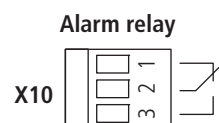
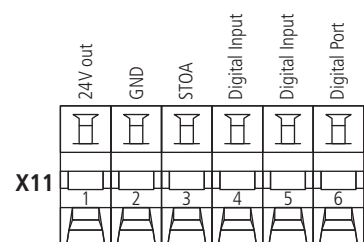
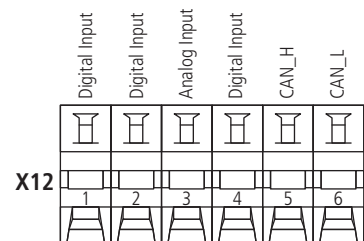
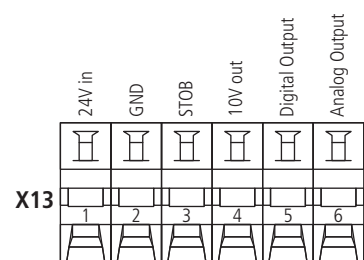


### Control terminals

Control signals are distributed over four separate terminal strips, located under the drive's removable front cover. Terminals include:

- 6 digital inputs
- 1 configurable digital I/O port
- 2 configurable multifunctional A/D inputs
- 1 digital output
- 1 configurable multifunctional A/D/pulse output
- 1 auxiliary voltage supply input
- 2 voltage supply outputs
- 1 Systembus/CAN communication interface

Terminal	Default function
X13.1	Auxiliary 24 VDC input
X13.2	GND for X13.1
X13.3	Digital input for Safe Torque Off B
X13.4	10 VDC output
X13.5	Multifunction Digital Output (default = RUN state)
X13.6	Multifunction Analog Output (default = Actual speed)
X12.1	Multifunction Digital Input (default = data set change-over bit 1)
X12.2	Multifunction Digital Input (default = fixed frequency change-over)
X12.3	Voltage Configurable Analog/Digital Multifunction Input (default = frequency reference)
X12.4	Voltage Configurable Analog/Digital Multifunction Input (default = motor thermal contact)
X12.5	Systembus/CAN signal +
X12.6	Systembus/CAN signal -
X11.1	24VDC output
X11.2	GND for X11.1
X11.3	Digital input for Safe Torque Off A
X11.4	Multifunction Digital Input (default = start clockwise)
X11.5	Multifunction Digital Input (default = start anticlockwise)
X11.6	Digital Configurable Input/Output (default = data set change-over bit 2)
X10.1	Normally closed Alarm Relay contact
X10.2	Alarm relay switching contact
X10.3	Normally open Alarm Relay contact



Series	Power supply
AGL 402	3ph 400V

The Agile Series covers a power range of 0.25 to 11 kW, divided into three sub-ranges, each covered by one physical drive size. Each drive size can therefore satisfy the needs of different power ratings to offer a suitable solution for all applications.

The three physical drive sizes are identical in height and depth but differ in width because of the different power modules combined with them. The sizes are easily identifiable for the same reason. The AGL402 three phase 400 V configuration soon will be partnered by single phase 230 V version.

	Size 1	Size 2	Size 3
	AGL402- ... 1 F A	AGL402- ... 2 F A	AGL402- ... 3 F A
Rating	0.25 kW	3.0 kW	5.5 kW
	0.37 kW	4.0 kW	7.5 kW
	0.55 kW	-	9.2 kW
	0.75 kW	-	11 kW
	1.1 kW	-	-
	1.5 kW	-	-
	2.2 kW	-	-

# AGL402 series - Technical data

# Agile

31

from 0.25 to 0.75 kW

INVERTER 3phx400V			Size 1			
			AGL402-02	AGL402-03	AGL402-05	AGL402-07
Output, motor side	Recommended motor power	P <sub>n</sub> kW	0.25	0.37	0.55	0.75
	Motor rated current	I <sub>n</sub> A	0.8	1.2	1.5	2.1
	Current overload 60 s	I <sub>OL</sub> A	1.2	1.8	2.3	3.2
	Current overload 1 s	I <sub>pk</sub> A	1.6	2.4	3.0	4.2
	Output voltage	U <sub>n</sub> V	3 x (0...U)			
	Output frequency	f <sub>n</sub> Hz	From 0 to 1000			
	Switching frequency	f <sub>c</sub> kHz	From 2 to 16			
	Protections	-	Short circuit phase to phase / phase to earth			
	DC-bus current 60 s	I <sub>DCOL</sub> A	1.1	1.7	2.1	3.0
Input, mains side	Mains configuration	-	TT, TN, IT			
	Mains rated voltage	U V	323 ... 528			
	Mains rated frequency	F Hz	45 ... 69			
	Input rated current	I A	1.10	1.50	2.00	2.70
	Fuses 3ph/PE	I A	6	6	6	6
	DC-bus rated voltage	U <sub>DC</sub> V	U x 1.41			
	Overvoltage category	-	DIN EN 50178 III			
General	Short circuit / earth protection	-	Yes, unlimited			
	Mounting position	-	Vertical			
	Degree of protection	-	IP 20 (EN 60529)			
	Dimensions	HxWxD mm	200 x 60 x 170			
	Fan cooling	-	No			
Environment	Coolant temperature	T <sub>n</sub> °C	From 0 to 40 (40 ... 55 with derating)			
	Humidity	-	5 ... 85, no condensing			
	Power dissipation	-	19	29	42	53
Options & accessories	Brake-chopper	-	Integrated			
	Line choke	-	Option			
	EMI filter	-	class A (EN 61800-3) integrated / class B option			
	Braking resistor	-	Option			
	Operator panel	-	Integrated			
	Communication interfaces	-	RS485 Modbus integrated / Systembus integrated / CANopen integrated RS232 option / Profibus DP option			



**from 1.1 to 2.2 kW**

INVERTER 3phx400V				Size 1		
				AGL402-09	AGL402-11	AGL402-13
Output, motor side	Recommended motor power	P <sub>n</sub>	kW	1.1	1.5	2.2
	Motor rated current	I <sub>n</sub>	A	3.0	4.0	5.5
	Current overload 60 s	I <sub>OL</sub>	A	4.5	6.0	8.2
	Current overload 1 s	I <sub>pk</sub>	A	6.0	8.0	11.0
	Output voltage	U <sub>n</sub>	V	3 x (0...U)		
	Output frequency	f <sub>n</sub>	Hz	From 0 to 1000		
	Switching frequency	f <sub>c</sub>	kHz	From 2 to 16		
	Protections	-	-	Short circuit phase to phase / phase to earth		
	DC-bus current 60 s	I <sub>DCOL</sub>	A	4.8	6.4	8.7
Input, mains side	Mains configuration	-	-	TT, TN, IT		
	Mains rated voltage	U	V	323 ... 528		
	Mains rated frequency	F	Hz	45 ... 69		
	Input rated current	I	A	3.90	5.20	7.30
	Fuses 3ph/PE	I	A	6	6	10
	DC-bus rated voltage	U <sub>DC</sub>	V	U x 1.41		
	Overvoltage category	-	-	DIN EN 50178 III		
General	Short circuit / earth protection	-	-	Yes, unlimited		
	Mounting position	-	-	Vertical		
	PDegree of protection	-	-	IP 20 (EN 60529)		
	Dimensions	HxWxD	mm	200 x 60 x 170		
	Fan cooling	-	-	Yes		
Environment	Coolant temperature	T <sub>n</sub>	°C	From 0 to 40 (40 ... 55 with derating)		
	Humidity	-	%	5 ... 85, no condensing		
	Power dissipation	-	W	70	89	122
Options & accessories	Brake-chopper	-	-	Integrated		
	Line choke	-	-	Option		
	EMI filter	-	-	class A (EN 61800-3) integrated / class B option		
	Braking resistor	-	-	Option		
	Operator panel	-	-	Integrated		
	Communication interfaces	-	-	RS485 Modbus integrated / Systembus integrated / CANopen integrated RS232 option / Profibus DP option		

## AGL402 series - Technical data

Agile

33

from 3 to 4 kW

INVERTER 3phx400V			Size 2	
			AGL402-15	AGL402-18
Output, motor side	Recommended motor power	P <sub>n</sub> kW	3.0	4.0
	Motor rated current	I <sub>n</sub> A	7.5	9.5
	Current overload 60 s	I <sub>OL</sub> A	11.2	14.2
	Current overload 1 s	I <sub>pk</sub> A	15.0	19.0
	Output voltage	U <sub>n</sub> V	3 x (0...U)	
	Output frequency	f <sub>n</sub> Hz	From 0 to 1000	
	Switching frequency	f <sub>c</sub> kHz	From 2 to 16	
	Protections	-	Short circuit phase to phase / phase to earth	
	DC-bus current 60 s	I <sub>DCOL</sub> A	4.8	6.4
Input, mains side	Mains configuration	-	TT, TN, IT	
	Mains rated voltage	U V	323 ... 528	
	Mains rated frequency	F Hz	45 ... 69	
	Input rated current	I A	9.8	12.8
	Fuses 3ph/PE	I A	10	10
	DC-bus rated voltage	U <sub>DC</sub> V	U x 1.41	
	Overvoltage category	-	DIN EN 50178 III	
General	Short circuit / earth protection	-	Yes, unlimited	
	Mounting position	-	Vertical	
	Degree of protection	-	IP 20 (EN 60529)	
	Dimensions	HxWxD mm	200 x 80 x 196	
	Fan cooling	-	Yes	
Environment	Coolant temperature	T <sub>n</sub> °C	From 0 to 40 (40 ... 55 with derating)	
	Humidity	-	5 ... 85, no condensing	
	Power dissipation	-	133	167
Options & accessories	Brake-chopper	-	Integrated	
	Line choke	-	Option	
	EMI filter	-	class A (EN 61800-3) integrated / class B option	
	Braking resistor	-	Option	
	Operator panel	-	Integrated	
	Communication interfaces	-	RS485 Modbus integrated / Systembus integrated / CANopen integrated RS232 option / Profibus DP option	

**from 5.5 to 11 kW**

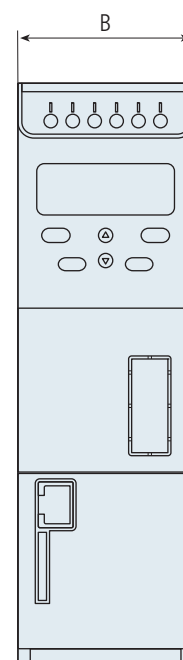
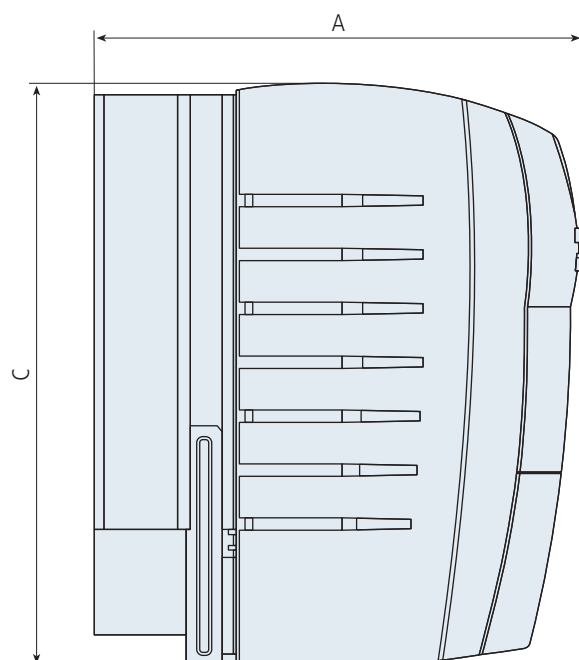
INVERTER 3phx400V			Size 3			
			AGL402-19	AGL402-21	AGL402-22	AGL402-23
Output, motor side	Recommended motor power	P <sub>n</sub> kW	5.5	7.5	9.2	11
	Motor rated current	I <sub>n</sub> A	13.0	17.0	20.0	23.0
	Current overload 60 s	I <sub>OL</sub> A	19.5	25.5	30.0	34.5
	Current overload 1 s	I <sub>pk</sub> A	26.0	34.0	38.0	46.0
	Output voltage	U <sub>n</sub> V	3 x (0...U)			
	Output frequency	f <sub>n</sub> Hz	From 0 to 1000			
	Switching frequency	f <sub>c</sub> kHz	From 2 to 16			
	Protections	- -	Short circuit phase to phase / phase to earth			
	DC-bus current 60 s	I <sub>DCOL</sub> A	21.0	27.0	32.0	37.0
Input, mains side	Mains configuration	- -	TT, TN, IT			
	Mains rated voltage	U V	323 ... 528			
	Mains rated frequency	F Hz	45 ... 69			
	Input rated current	I A	17.2	23.0	28.1	33.6
	Fuses3ph/PE	I A	25	25	35	35
	DC-bus rated voltage	U <sub>DC</sub> V	U x 1.41			
	Overvoltage category	- -	DIN EN 50178 III			
General	Short circuit / earth protection	- -	Yes, unlimited			
	Mounting position	- -	Vertical			
	Degree of protection	- -	IP 20 (EN 60529)			
	Dimensions	HxWxD mm	200 x 125 x 205			
	Fan cooling	- -	Yes			
Environment	Coolant temperature	T <sub>n</sub> °C	From 0 to 40 (40 ... 55 with derating)			
	Humidity	- %	5 ... 85, no condensing			
	Power dissipation	- W	235	321	393	470
Options & accessories	Brake-chopper	- -	Integrated			
	Line choke	- -	Option			
	EMI filter	- -	class A (EN 61800-3) integrated / class B (external) option			
	Braking resistor	- -	Option			
	Operator panel	- -	Integrated			
	Communication interfaces	- -	RS485 Modbus integrated / Systembus integrated / CANopen integrated RS232 option / Profibus DP option			

## Dimensions

**Agile** 35

Size 1

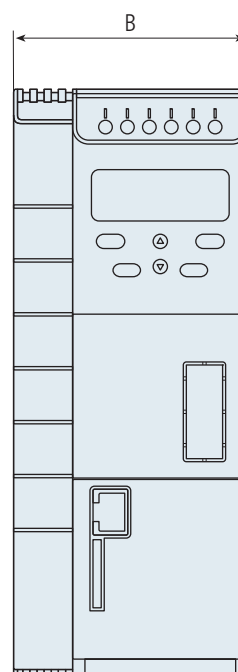
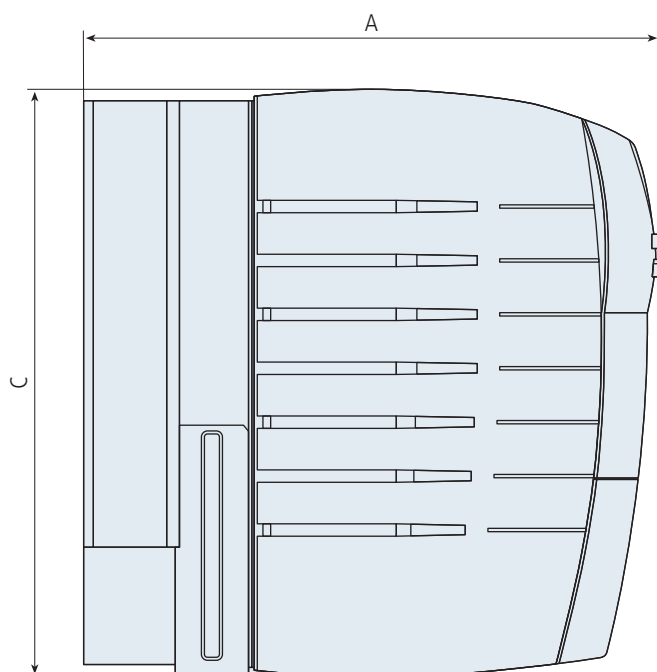
	mm
<b>A</b>	170
<b>B</b>	60
<b>C</b>	200



Size 2



	mm
A	196
B	80
C	200



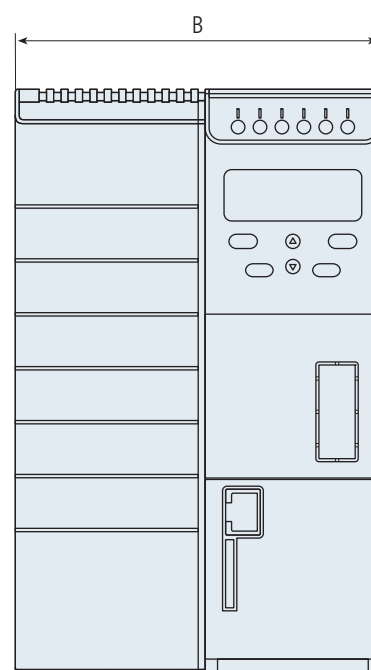
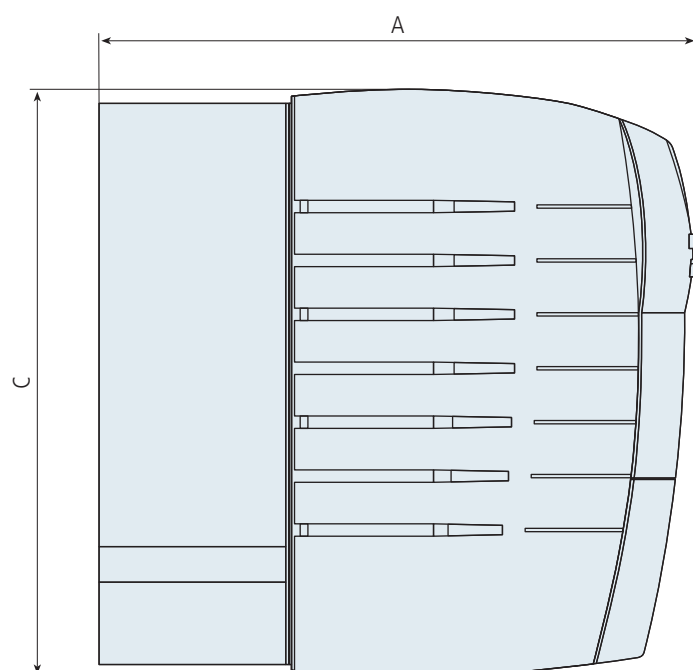


## Dimensions

**Agile** 37

Size 3

	mm
<b>A</b>	205
<b>B</b>	125
<b>C</b>	200



### Obligatory compliance:

<b>DIN EN 61800-1</b> 1999-08	<b>Adjustable Speed Electrical Power Drive System - part 1:</b> <ul style="list-style-type: none"> <li>- General requirements</li> <li>- Rating specifications for Low Voltage Adjustable Speed d.c. Power Drive Systems (IEC 61800-1:1997)</li> <li>- German version EN 61800-1:1998</li> </ul>
<b>DIN EN 61800-2</b> 1999-08	<b>Adjustable Speed Electrical Power Drive System - part 2:</b> <ul style="list-style-type: none"> <li>- General requirements</li> <li>- Rating specifications for Low Voltage Adjustable Frequency a.c. Power Drive Systems (IEC 61800-2:1998)</li> <li>- German version EN 61800-2:1998</li> </ul>
<b>DIN EN 61800-3</b> 2005-07	<b>Adjustable Speed Electrical Power Drive System - part 3:</b> <ul style="list-style-type: none"> <li>- EMC requirements and specific test methods (IEC 61800-3:2004)</li> <li>- German version EN 61800-3:2004</li> </ul>
<b>DIN EN 61800-5-1</b> <b>Amend. 2</b> 2006-01	<b>Adjustable Speed Electrical Power Drive System - part 5-1:</b> <ul style="list-style-type: none"> <li>- Safety requirements</li> <li>- Electrical thermal and energy (IEC 61800-5-1:2003)</li> <li>- German version EN 61800-5-1:2003</li> <li>- Amend. to DIN EN 618000-5-1</li> </ul>
<b>DIN EN 61000-2-2</b>	<b>Harmonic current limits</b>
<b>DIN EN 61000-2-12</b>	<b>Harmonic current limits</b>
<b>DIN EN 50178</b> 1998-04	<b>Electronic equipment for use in power installations</b> German version EN 50178:1997
<b>2006/95/EC</b>	<b>Low Voltage Directive</b>
<b>89/336/EEC</b>	<b>EMC Directive</b>

### Possible certifications:

<b>UL (508c)</b>	<b>UL Standard for Safety for Power conversion equipment</b>
<b>cUL (CSA C22.2 No. 14)</b>	
<b>CE</b>	
<b>C-Tick</b>	
<b>CCC</b>	
<b>GOST</b>	

## Optional modules

**Agile** 39

Even in their basic configuration, Agile drives are equipped with an on-board RJ45 connector for use with communications ports.

Nevertheless, if you wish to extend the opportunities for field network integration you can install an optional module with an additional network interface.

Agile drives can therefore be integrated in existing field buses simply by adapting drive communications to the hardware and software of the existing communications standard.

Agile drives use exactly the same communication modules as Bonfiglioli's Active Series. They also enjoy the same plug & play functionality, so that the drive recognises and enables the new module automatically as soon as it is powered on.

Agile drives support various communication standards. Some of these do not require any optional equipment while others require the corresponding module to be installed. See the table alongside.

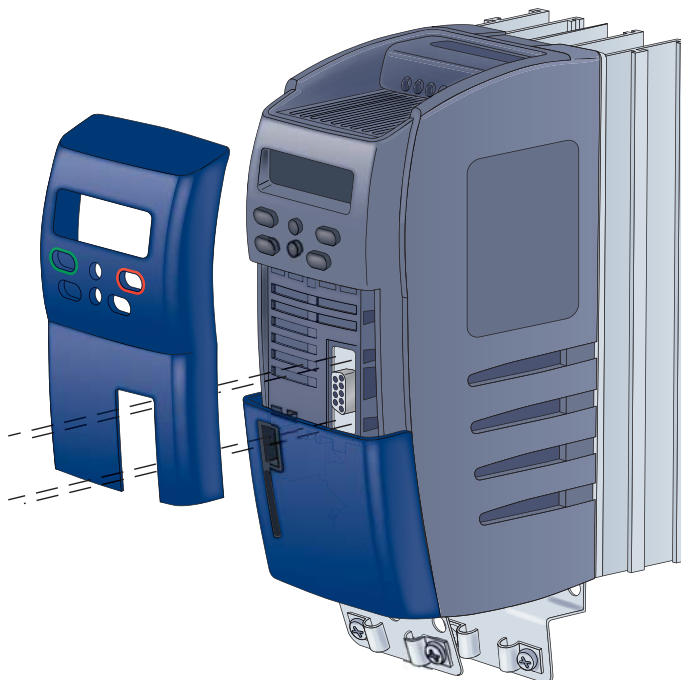
All optional modules are identical in shape and size, but differ in electronic functioning according to the standards of the type of field bus they communicate with.

Communication modules are installed in slots in the front of the drive. Simply remove the protective cover to access the slots. A secure push-fit ensures an efficient electrical connection.

With the front panel removed, the DB9 connector for the mains connection module is also accessible.



Field bus	Optional module
Profibus DP V1	CM-PDP
CANopen	CM-CAN
RS-485 Modbus	CM-485
RS-232	CM-232



## Installation equipment

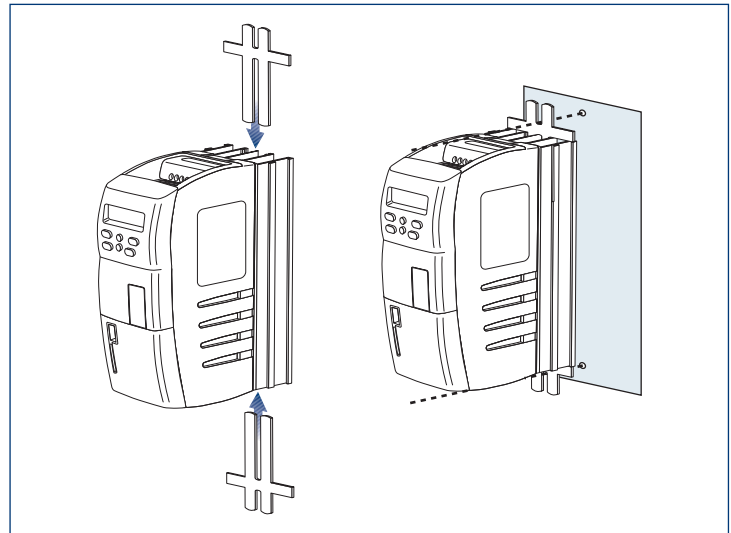
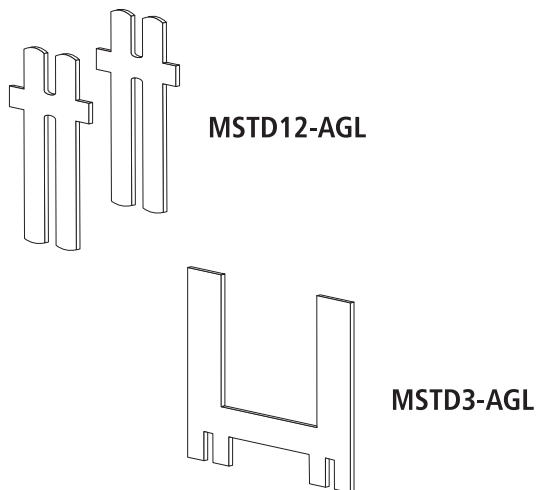
There are a number of different ways to install Agile inverter drives inside control panels. Drives can be installed using the metal brackets supplied or using one of the various optional kits.

The following table summarises what installation equipment is available for what inverter sizes.

Inverter		Standard mounting (supplied)	Feed-through mounting (optional)	DIN rail mounting (optional)	Anti-vibration mounting (optional)
Size	Type	MSTD kit	MPSV kit	MDIN kit	MNVIB kit
1	AGL402-02 1 F A	MSTD12-AGL	MPSV1-AGL	MDIN1-AGL	MNVIB1-AGL
	AGL402-03 1F A				
	AGL402-05 1 F A				
	AGL402-07 1 F A				
	AGL402-09 1 F A				
	AGL402-11 1 F A				
	AGL402-13 1 F A				
2	AGL402-15 2 F A		MPSV2-AGL		MNVIB2-AGL
	AGL402-18 2 F A				
3	AGL402-19 3 F A	MSTD3-AGL	MPSV3-AGL	-	MNVIB3-AGL
	AGL402-21 3 F A				
	AGL402-22 3 F A				
	AGL402-23 3 F A				

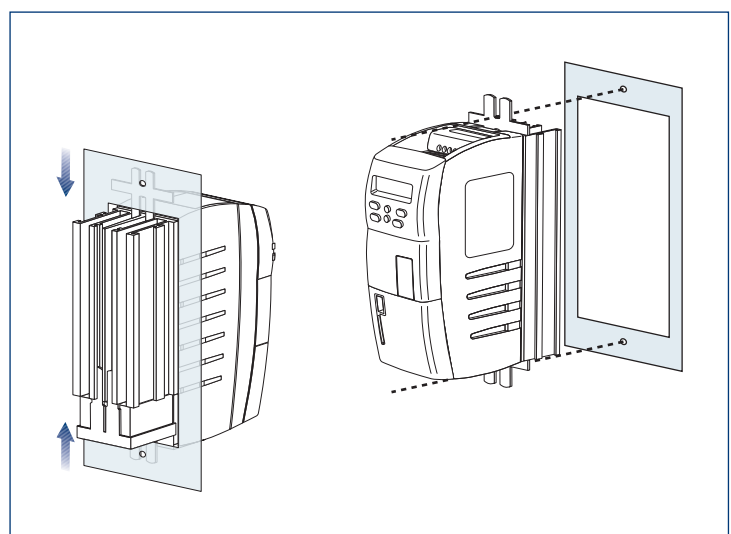
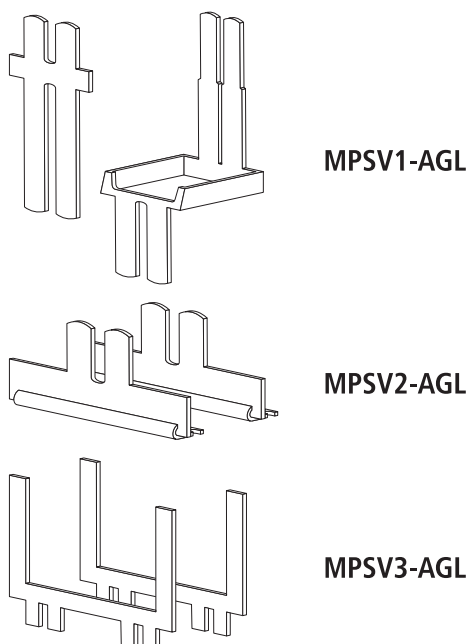
### *MSTD kit (standard mounting)*

This kit comprises two brackets that engage with slots in the drive's heat sink fins. The brackets are fixed to the inside wall of the control panel with two screws.



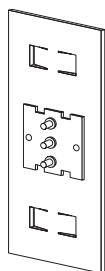
### *MPSV kit (feed-through mounting)*

When heat has to be dissipated outside the control panel, or component depth minimised, the feed-through mounting kit lets you install the drive with the heat sink outside and the rest of the drive inside the control panel.

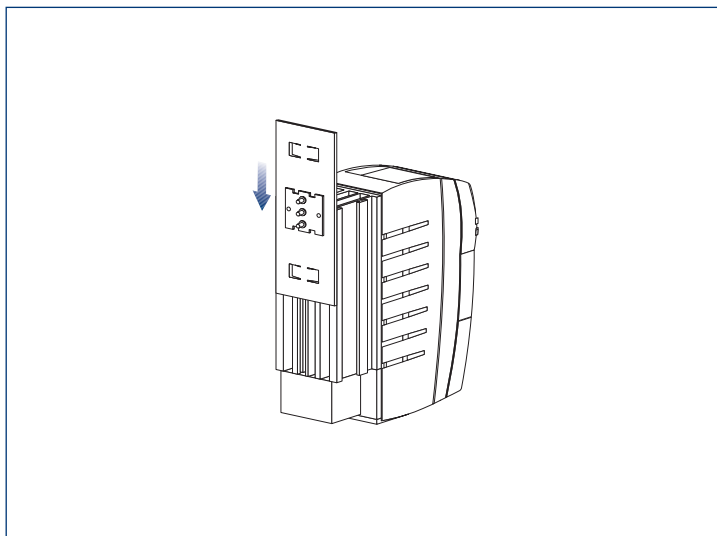


### ***MDIN kit (DIN mounting)***

Only available for Agile size 1 drives, the MDIN kit comprises a metal plate that engages with slots in the drive's heat sink fins and allows the drive to be installed on a DIN rail inside the control panel.

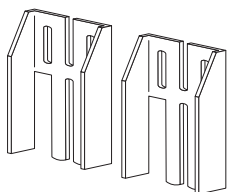


**MDIN1-AGL**

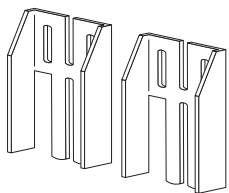


### ***MNVIB kit (vibration proof mounting)***

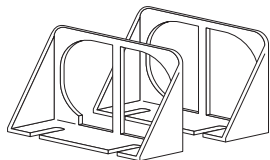
Designed for installation in high vibrations environment, the MNVIB kit consists of two inserts to introduce between the heat sink fins to assure greater strength of attachment.



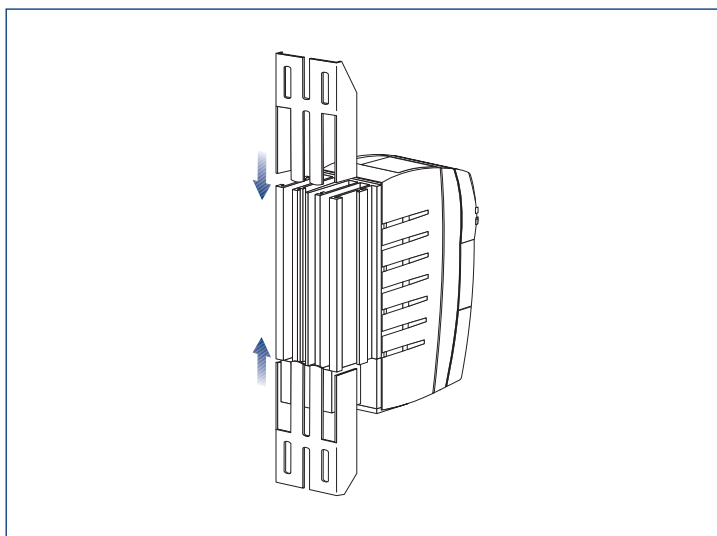
**MNVIB1-AGL**



**MNVIB2-AGL**



**MNVIB3-AGL**





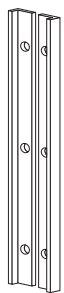
### *Cold Plate design form*

The Agile' s standard version is executed with integrated heat-sink which contributes to define the inverter overall dimensions allowing optimal performances by means of suitable heat disposal.

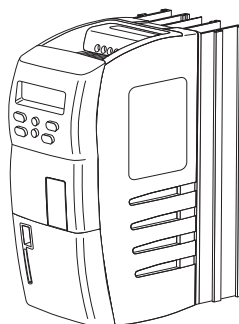
For special applications requiring space saving or compliance with heavy environmental regimes, Agile offers an alternative design form, cold plate version, on demand during purchase order emission.

The cold plate version is realized without built-in cooling ribs which instead must be prepared by the user according to parameters reported on the relevant technical manual.

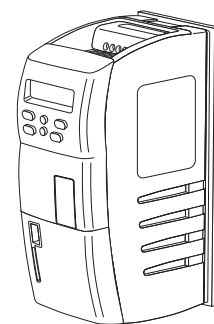
In that configuration the drive backside ends with smooth metal plate able to be fixed to an auxiliary heat-sink by means of specific mounting kit.



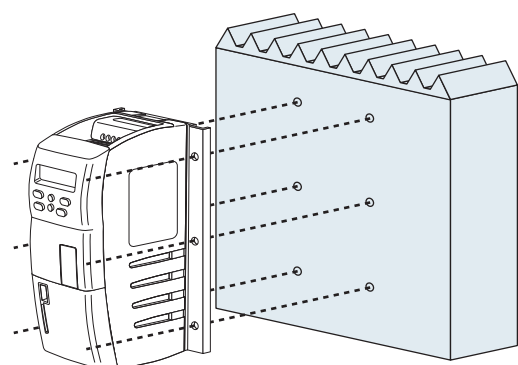
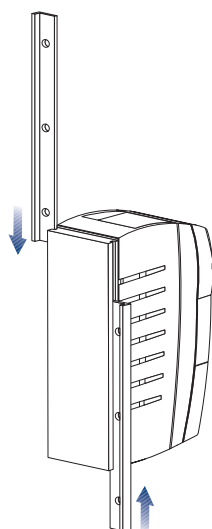
**MCP-AGL**



Agile standard version



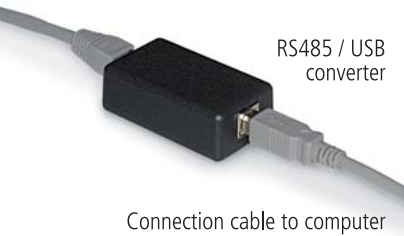
Agile Cold Plate version



Control panel heat sink

## ASK-USB serial connection kit

Connection cable to drive



RS485 / USB  
converter

Connection cable to computer

AgilE inverter drives are equipped with a number of different communication interfaces. Some of these (RS485, CAN-Systembus) are integrated in the basic product, while others (RS232, CAN, Profibus) are only available if the corresponding CM optional module is installed in the drive.

The RS485 port is integrated and accessible via the RJ45 connector on the front panel. This port is able to communicate using Modbus RTU protocol and Bonfiglioli Vectron's own proprietary protocol.

The ASK-USB connection kit allows you to connect your Agile drive to your computer's USB port. The kit comprises three components:

- an RS485 / USB converter
- a connection cable to the drive
- a connection cable to the computer



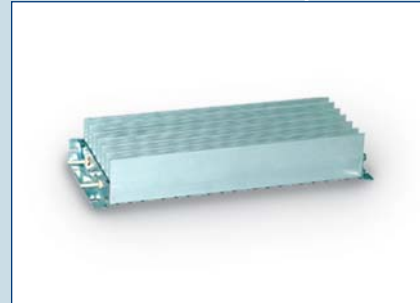
RJ45 connection  
to the drive

USB connection to  
the computer

**Regenerative mode**

When an inverter-controlled electric motor is braking, it becomes regenerative and returns electrical energy to the drive.

This causes voltage in the drive's intermediate circuit to rise to a value at which it becomes necessary to dispose of excess energy through a recovery system or through external dissipative components. Agile drives support both methods of regeneration energy management and provide a DC-bus power connection to other drives capable of using the excess energy, and a connection to a braking resistor for the thermal dissipation of energy.

**Braking Resistor**

All Agile drives have a built-in braking chopper for use with a range of Bonfiglioli braking resistors, selected to suit the duty cycle of the application.

BR Series braking resistors are safe and compact, offer an index of protection of IP20 and above, are suitable for panel mounting and feature integrated thermal protection.

BR resistors can be used with all Bonfiglioli drives, from the AGL Series to the ACT, ACU and VCB Series.

Each resistor is identified by a power rating and a resistance value, which form the criteria for combination with different drive ratings.

To help identify the most suitable braking resistors for different drives and applications, the following table suggests pairings that allow drives to dissipate their full rated power to the resistor for a limited by cyclically repeatable time.

Inverter		Recommended Bonfiglioli resistor			Reference cycle *	
Type	Rated power $P_n$ (kW)	Type	Continuous power (W)	Resistance ** ( $\Omega$ )	Dissipated power $P_R$ (kW)	Duty cycle $\delta_R$ (%)
AGL 402-02	0.25	BR 213/300	213	300	0.25	84
AGL 402-03	0.37	BR 213/300	213	300	0.37	56
AGL 402-05	0.55	BR 213/300	213	300	0.55	38
AGL 402-07	0.75	BR 213/300	213	300	0.75	28
AGL 402-09	1.1	BR 213/300	213	300	1.1	19
AGL 402-11	1.5	BR 213/300	213	300	1.5	14
AGL 402-13	2.2	BR 471/136	471	136	2.2	21
AGL 402-15	3.0	BR 471/136	471	136	3.0	16
AGL 402-18	4.0	BR 696/92	696	92	4.0	17
AGL 402-19	5.5	BR 1330/48	1330	48	5.5	24
AGL 402-21	7.5	BR 1330/48	1330	48	7.5	18
AGL 402-22	9.2	BR 1330/48	1330	48	9.2	14
AGL 402-23	11	BR 2000/32	2000	32	11	18

\* referred to a period of 120 seconds

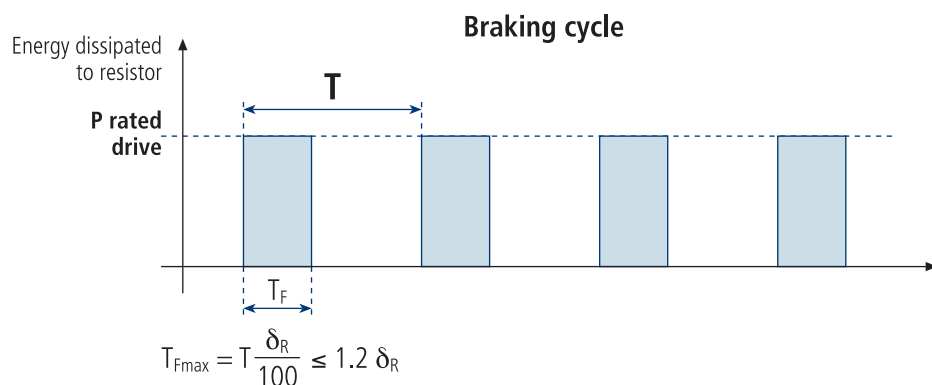
\*\* Don't apply resistance values lower than displayed

Since each resistor has a lower continuous rated power value than the corresponding drive, it is important to respect the specified dissipation cycle. Though the component will heat up, this cycle permits adequate cooling.

The purpose of the reference cycle is to inform users that over a period of 120 seconds, braking time must not exceed  $1.2 \delta_R$  seconds, or the resistor will overheat.

The reference cycle is therefore a limit cycle and must not be exceeded.

Given an application with a user-defined period  $T$ , during which the drive's full rated power is deviated to the resistor, braking time must not exceed the value of  $T_{Fmax}$  calculated on the basis of the reference cycle.



**Mains harmonics**

Sometimes the Mains can be site of floating current harmonics generated by other user equipments which can attenuate our system's active power.

**Line choke**

The best solution to protect our inverter against Mains harmonics is to install line-choke in series with each input phase, filtering the current before reaching the drive.

The mains power supply has its own intrinsic inductance. The addition of line chokes boosts this to offer ever greater impedance to higher harmonic components and act effectively as a low-pass filter.

Line chokes should have a short circuit rating some 20 to 40 times greater than the rated power of the drive and should produce voltage drops no greater than 4%.

Bonfiglioli can provide a range of line chokes satisfying these criteria for use with different drive sizes according to the table below.

Inverter	Recommended Bonfiglioli line choke
AGL402-02	LCVT004
AGL402-03	LCVT004
AGL402-05	LCVT004
AGL402-07	LCVT004
AGL402-09	LCVT004
AGL402-11	LCVT006
AGL402-13	LCVT008
AGL402-15	LCVT010
AGL402-18	LCVT015
AGL402-19	LCVT018
AGL402-21	LCVT025
AGL402-22	LCVT034
AGL402-23	LCVT034





### ***Bonfiglioli is a Partner Worldwide for Power Transmission and Motion Control***



The ever-growing export share has led Bonfiglioli into the most far away Countries. With expansion plans entailing a further growth of the sales network Bonfiglioli aims at improving both the competitiveness of its products and the effectiveness of the Customer service. In every market place Bonfiglioli is committed to improve the Customer satisfaction by offering state-of-the-art technology and shorter deliveries. Nowadays branch companies and BEST Partners bearing the Bonfiglioli name are operating in seventeen Countries outside Italy, with sales and service in the other countries managed by appointed dealers. The domestic network is made up of 30 sales office and representatives and 100 dealers operating with their own warehouse and supporting Customers locally. Throughout the World Bonfiglioli's reputed know-how and Service guarantee effective and timely assistance.





## Bonfiglioli Worldwide & BEST Partners

## Worldwide

### AUSTRALIA

BONFIGLIOLI TRANSMISSION (Aust) Pty Ltd.  
2, Cox Place Glendenning NSW 2761 (Australia)  
Locked Bag 1000 Plumpton NSW 2761  
Tel. (+61) 2 8811 8000 - Fax (+61) 2 9675 6605  
www.bonfiglioli.com.au - sales@bonfiglioli.com.au

### AUSTRIA

BONFIGLIOLI ÖSTERREICH GmbH  
Molkereistr. 4 - A-2700 Wiener Neustadt  
Tel. (+43) 02622 22400 - Fax (+43) 02622 22386  
www.bonfiglioli.at - info@bonfiglioli.at

### MOLL MOTOR GmbH

Industriestrasse 8 - 2000 Stockerau  
Tel. (+43) 2266 634210 - Fax (+43) 2266 6342180  
www.mollmotor.at - office@mollmotor.at

### BELGIUM

ESCO TRANSMISSION N.V.S.A.  
Culliganlaan 3 - 1831 Machelem Diegem  
Tel. (+32) 2 7176460 - Fax (+32) 2 7176461  
www.esco-transmissions.be - info@esco-transmissions.be

### BRAZIL

BONFIGLIOLI REDUTORES DO BRASIL INDÚSTRIA E COMÉRCIO LTDA.  
Travessa Cláudio Armando 171 - Bloco 3 - CEP 09861-730  
Bairro Assunção - São Bernardo do Campo - São Paulo (Brasil)  
Tel. (+55) 11 4344 1900 - Fax (+55) 11 4344 1906  
www.bonfiglioliodobrasil.com.br - bonfiglioli@bonfiglioliodobrasil.com.br

### CANADA

BONFIGLIOLI CANADA INC.  
2-7941 Jane Street - Concord, Ontario L4K 4L6  
Tel. (+1) 905 7384466 - Fax (+1) 905 7389833  
www.bonfigliolicanada.com - sales@bonfigliolicanada.com

### CHILE

IMATESA S.A.  
Santa Rosa 5699 - San Miguel - Santiago  
Tel. (+56) 2 5264702 - Fax (+56) 2 5265878  
www.imatesa.cl - imatesa@imatesa.cl

### CHINA

BONFIGLIOLI DRIVES (SHANGHAI) CO. LTD.  
19D, No. 360 Pudong Road (S)  
New Shanghai International Tower - 200120 Shanghai (P.R. China)  
Tel. (+86) 21 69225500 - Fax (+86) 21 69225511  
www.bonfiglioli.cn - bds@bonfiglioli.com.cn

### DENMARK

BRD. KLEE  
Gadagervej 11 Denmark - 2620 Albertslund  
Tel. (+45) 43 868333 - Fax (+45) 868388  
www.brd-klee.dk - klee@brd-klee.dk

### FRANCE

BONFIGLIOLI TRANSMISSIONS S.A.  
14 Rue Eugène Pottier BP 19  
Zone Industrielle de Moimont II - 95670 Marly la Ville  
Tel. (+33) 1 34474510 - Fax (+33) 1 34688800  
www.bonfiglioli.fr - btf@bonfiglioli.fr

### GERMANY

BONFIGLIOLI DEUTSCHLAND GmbH  
Sperbenweg 12 - 41468 Neuss  
Tel. (+49) 02131 2988-0 - Fax (+49) 02131 2988-100  
www.bonfiglioli.de - info@bonfiglioli.de

### GREAT BRITAIN

BONFIGLIOLI UK Ltd  
Industrial Equipment - Unit 7, Colemeadow Road  
North Moons Moat - Redditch, Worcestershire B98 9PB  
Tel. (+44) 1527 65022 - Fax (+44) 1527 61995  
www.bonfiglioli.co.uk - uksales@bonfiglioli-uk.com  
Mobile Equipment  
3 - 7 Grosvenor Grange, Woolston, Warrington - Cheshire WA1 4SF  
Tel. (+44) 1925 852667 - Fax (+44) 1925 852668  
www.bonfiglioli.co.uk - sales@bonfiglioli.co.uk

### GREECE

B.E.S.T. HELLAS S.A.  
O.T. 48A T.O. 230 - C.P. 570 22, Industrial Area - Thessaloniki  
Tel. (+30) 2310 796456 - Fax (+30) 2310 795903  
www.bonfiglioli.gr - info@bonfiglioli.gr

### HOLLAND

ELSTO AANDRIJFTECHNIEK  
Loosterweg, 7 - 2215 TL Voorhout  
Tel. (+31) 252 219 123 - Fax (+31) 252 231 660  
www.elsto.nl - info@elsto.nl

### HUNGARY

AGISYS AGITATORS & TRANSMISSIONS Ltd  
2045 Törökbalint, Tó u.2. (Hungary)  
Tel. (+36) 23 50 11 50 - Fax (+36) 23 50 11 59  
www.agisys.hu - info@agisys.hu

### INDIA

BONFIGLIOLI TRANSMISSIONS PVT Ltd.  
PLOT AC7-AC11 Sidco Industrial Estate - Thirumudivakkam - Chennai 600 044  
Tel. (+91(0) 44 24781035 / 24781036 / 24781037  
Fax (+91(0) 44 24780091 / 24781904  
www.bonfiglioli.co.in - bonfig@vsnl.com

### INDONESIA

PT. ANEKAMAKMUR TEKNIK NUSAJAYA  
Pertokoan Glodok Makmur No. 32 - Jakarta Barat  
Tel. (+62) 21 624 8828 - Fax (+62) 21 624 2405  
www.anekamakmur.com - sales@anekamakmur.com

### ITALY

BONFIGLIOLI ITALIA S.p.A.  
Via Sandro Pertini lotto 7b - 20080 Carpiano (Milano)  
Tel. (+39) 02 985081 - Fax (+39) 02 985085817  
www.bonfiglioli.it - customerservice.italia@bonfiglioli.it

### NEW ZEALAND

SAECO BEARINGS TRANSMISSION  
36 Hastie Avenue, Mangere Po Box 22256, Otahuhu - Auckland  
Tel. (+64) 9 634 7540 - Fax (+64) 9 634 7552  
mark@saeco.co.nz

### POLAND

POLPACK Sp. z o.o. - Ul. Polna 129 - 87100 Torun  
Tel. (+48) 56 6559235 to 37 - Fax (+48) 56 6559238  
www.polpack.com.pl - polpack@polpack.com.pl

### PORTUGAL

BT BONFITEC Equipamentos Industriais, Lda.  
Largo do Colegio de Ermesinde, 70 - Formiga 4445-382 Ermesinde  
Tel. (+351) 229759634/5/6 - Fax (+351) 229752211  
www.bonfitec.pt - bonfitec@bonfitec.pt

### RUSSIA

FAM  
57, Maly prospekt, V.O. - 199048, St. Petersburg  
Tel. (+7) 812 3319333 - Fax (+7) 812 3271454  
www.fam-drive.ru - info@fam-drive.ru

### SPAIN

TECNOTRANS BONFIGLIOLI S.A.  
Pol. Ind. Zona Franca sector C, calle F, nº6 08040 Barcelona  
Tel. (+34) 93 4478400 - Fax (+34) 93 3360402  
www.tecnotrans.com - tecnotrans@tecnotrans.com

### SOUTH AFRICA

BONFIGLIOLI POWER TRANSMISSION Pty Ltd.  
55 Galaxy Avenue, Linbro Business Park - Sandton  
Tel. (+27) 11 608 2030 OR - Fax (+27) 11 608 2631  
www.bonfiglioli.co.za - bonfigsales@bonfiglioli.co.za

### SOUTH KOREA

YOUN HO INDUSTRIAL  
Room B1, World Plaza Bldg.  
1262 Guro-Dong, Gurd-Gu, Seoul  
Tel. (+82) 2 626 43201 - Fax (+82) 2 263 23202  
www.younho.com - younho@younho.com

### SWEDEN

BONFIGLIOLI SKANDINAVIEN AB  
Koppargatan 8 - 234 35 Lomma (Sweden)  
Tel. (+46) 40418230 - Fax (+46) 40414508  
www.bonfiglioli.se - info@bonfiglioli.se

### THAILAND

K.P.T. MACHINERY (1993) CO.LTD.  
259/83 Soi Phiboovves, Sukhumvit 71 Rd. Phraknong-nur,  
Wattana, Bangkok 10110  
Tel. (+66) 2 3913030/7111998  
Fax (+66) 2 7112852/3811308/3814905  
www.kpt-group.com - sales@kpt-group.com

### TURKEY

BONFIGLIOLI TURKIYE  
Atatürk Organize Sanayi Bölgesi, 10015 Sk. No: 17, Çiğli - Izmir  
Tel. +90 (0) 232 328 22 77 (pbx) - Fax +90 (0) 232 328 04 14  
www.bonfiglioli.com.tr - info@bonfiglioli.com.tr

### USA

BONFIGLIOLI USA, INC.  
3541 Hargrave Drive Hebron, Kentucky 41048  
Tel. (+1) 859 334 3333 - Fax (+1) 859 334 8888  
www.bonfiglioliusa.com  
industrialsales@bonfiglioliusa.com - mobilesales@bonfiglioliusa.com

### VENEZUELA

MAICA SOLUCIONES TECNICAS C.A.  
Calle 3B - Edif. Comindu - Planta Baja  
Local B - La Urbina - Caracas 1070  
Tel. (+58) 212 2413570 / 2425268 / 2418263  
Fax (+58) 212 2424552 - Tlx 24780 Maica V - maica1@cantv.net

### HEADQUARTERS

BONFIGLIOLI RIDUTTORI S.p.A.  
Via Giovanni XXIII, 7/A  
40012 Lippo di Calderara di Reno  
Bologna (ITALY)  
Tel. (+39) 051 6473111  
Fax (+39) 051 6473126  
www.bonfiglioli.com  
bonfiglioli@bonfiglioli.com

### SPARE PARTS BONFIGLIOLI

B.R.T.  
Via Castagnini, 2-4  
Z.I. Bargellino - 40012  
Calderara di Reno - Bologna (ITALY)  
Tel. (+39) 051 727844  
Fax (+39) 051 727066  
www.bonfiglioliricambi.it  
brrt@bonfiglioli.com

**Agile**



[www.bonfiglioli.com](http://www.bonfiglioli.com)



**BONFIGLIOLI**